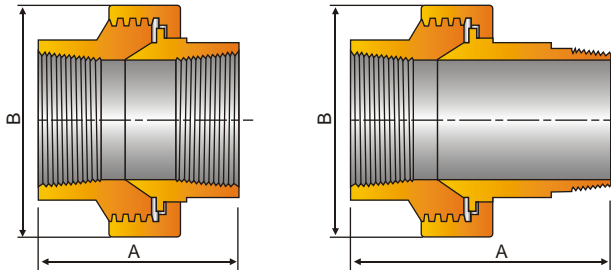




UNIONS

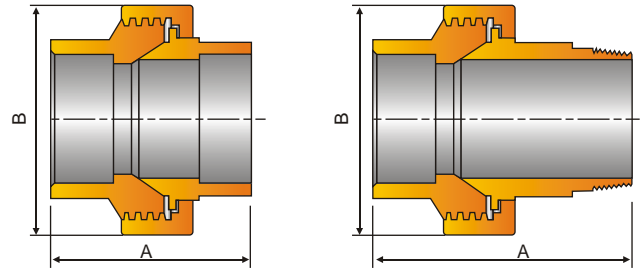
(SCREWED END) CONFORM TO ASME B16.11



Union Female - Female

Union Male - Female

(SOCKET WELD END) CONFORM TO ASME B16.11



Union Female - Female

Union Male - Female

Rating 3000 LBS

SIZE	DIMENSION	
	A	B
1/8	1 7/8	1 7/16
1/4	1 7/8	1 7/16
3/8	2 1/32	1 13/16
1/2	2 3/16	1 7/8
3/4	2 5/16	2 3/16
1	2 7/16	2 11/16
1 1/4	2 25/32	3 5/32
1 1/2	3 1/8	3 3/8
2	3 9/16	4 1/8

Rating 3000 LBS

SIZE	DIMENSION	
	A	B
1/8	2 5/16	1 7/16
1/4	2 1/2	1 7/16
3/8	2 21/32	1 13/16
1/2	2 31/32	1 7/8
3/4	3 5/32	2 3/16
1	3 7/16	2 11/16
1 1/4	3 13/16	3 5/32
1 1/2	4 1/8	3 3/8
2	4 5/8	4 1/8

Rating 3000 LBS

SIZE	DIMENSION	
	A	B
1/8	1 7/8	1 7/16
1/4	1 7/8	1 7/16
3/8	2 1/32	1 13/16
1/2	2 3/16	1 7/8
3/4	2 5/16	2 3/16
1	2 7/16	2 11/16
1 1/4	2 5/32	3 5/32
1 1/2	3 1/8	3 3/8
2	3 9/16	4 1/8

Rating 3000 LBS

SIZE	DIMENSION	
	A	B
1/8	2 5/16	1 7/16
1/4	2 1/2	1 7/16
3/8	2 21/32	1 13/16
1/2	2 31/32	1 7/8
3/4	3 5/32	2 3/16
1	3 7/16	2 11/16
1 1/4	3 13/16	3 5/32
1 1/2	3 1/8	3 3/8
2	4 5/8	4 1/8

Rating 6000 LBS

SIZE	DIMENSION	
	A	B
1/8	2 1/32	1 13/16
1/4	2 3/16	1 7/8
3/8	2 5/16	2 3/16
1/2	2 7/16	2 11/16
3/4	2 25/32	3 5/32
1	3 1/8	3 3/8
1 1/4	3 9/16	4 1/8
1 1/2	-	-

Rating 6000 LBS

SIZE	DIMENSION	
	A	B
1/8	2 21/32	1 13/16
1/4	2 31/32	1 7/8
3/8	3 5/32	2 3/16
1/2	3 7/16	2 11/16
3/4	3 13/16	3 5/32
1	4 1/8	3 3/8
1 1/4	4 5/8	4 1/8
1 1/2	-	-

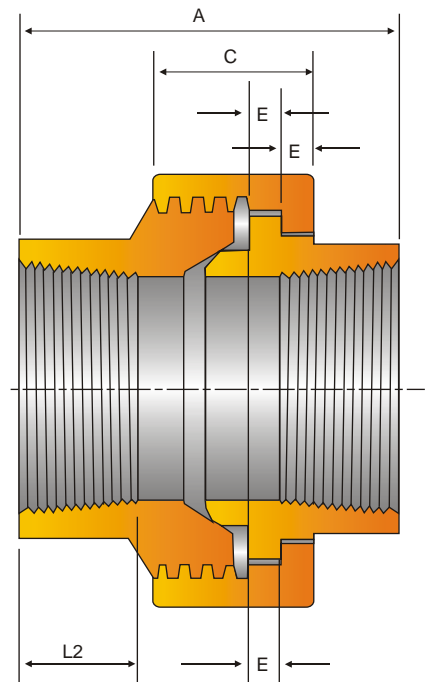
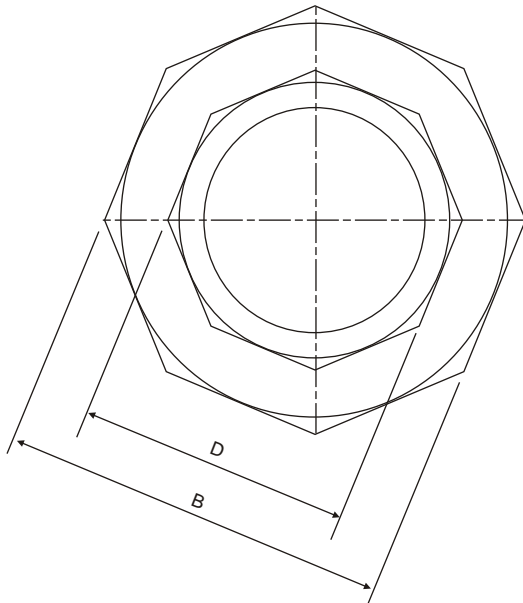
Rating 6000 LBS

SIZE	DIMENSION	
	A	B
1/8	1 7/8	1 7/16
1/4	2 1/32	1 13/16
3/8	2 3/16	1 7/8
1/2	2 5/16	2 3/16
3/4	2 7/16	2 11/16
1	2 5/32	3 5/32
1 1/4	3 1/8	3 3/8
1 1/2	3 9/16	4 1/8

Rating 6000 LBS

SIZE	DIMENSION	
	A	B
1/8	2 1/2	1 7/16
1/4	2 21/32	1 13/16
3/8	2 31/32	1 7/8
1/2	3 5/32	2 3/16
3/4	3 7/16	2 11/16
1	3 13/16	3 5/32
1 1/4	4 1/8	3 3/8
1 1/2	4 1/8	4 1/8

UNIONS



Union Female - Female
(Screwed) Conform to BS 3799

NOMINAL SIZE		3000 P. S.I.					
		END TO END	WIDTH A/F UNION NUT (Min.)	HEIGHT OF UNION NUT (Min.)	WIDTH A/F OF ENDS (Min.)	THICKNESS OF SHOULDER (Min.)	LENGTH OF THREAD (Min.)
		A	B	C	D	E	L2
in	mm	mm	mm	mm	mm	mm	mm
1/8	(6)	40	32	16	17	3.2	6.70
1/4	(8)	43	32	18	19	3.2	10.21
3/8	(10)	48	36	19	22	3.2	10.36
1/2	(15)	51	43	21	30	4.0	13.56
3/4	(20)	57	50	24	36	4.8	13.86
1	(25)	64	60	25	41	4.8	17.34
1 1/4	(32)	70	70	29	50	5.6	17.93
1 1/2	(40)	79	78	30	60	5.6	18.38
2	(50)	89	95	37	70	6.4	19.22
2 1/2	(65)	118	125	48	85	9.6	28.89
3	(80)	121	140	51	100	12.7	30.48

NOTE:

- A. Other external forms of nut and ends can also be provided upon request.
- B. Other sizes and threads as per API, ASME can be provided on request.